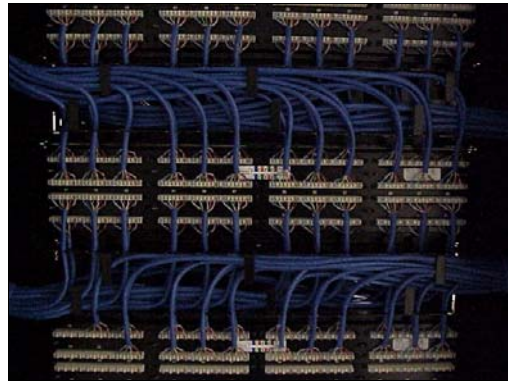
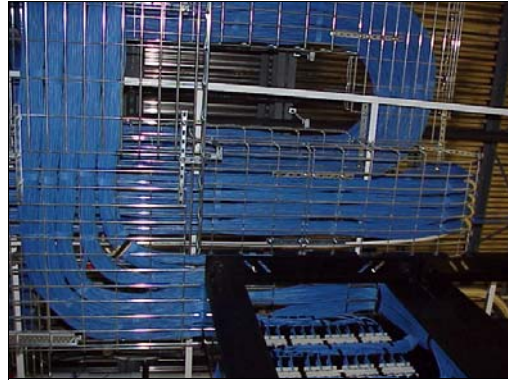
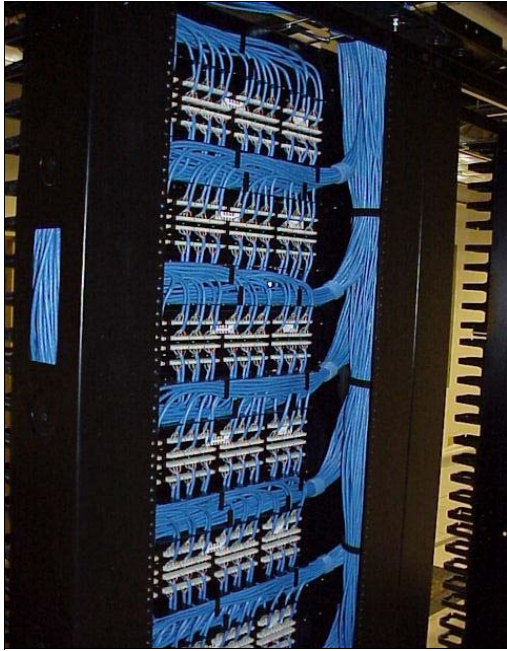


DATA COMMUNICATIONS



HANOVER HOSPITAL, MEDICAL ARTS BUILDING Hanover, PA

CAT5e cabling for telephone and data. CAT5e voice cabling is terminated on BIX blocks on the wall, while the data lands on 48-port patch panels. Patch panels are separated with dual-sided wire-management. One rack was designated as the rack for the cabling and the other for the network electronics. This building has one MC, centrally located in the basement of the building. Basket tray was used to support the service loop and the cable coming into the rack. J-hooks were used to support the cables in the ceiling space. Each cable was CAT5e certified.



Electrical • Automation • DataCom
Fire/Security • Pole/Line

Giving Business the Power to Grow®

Contact us today at 800.758.0780 • www.gettle.com



Corning Cable Systems



EXTENDED WARRANTY PROGRAM